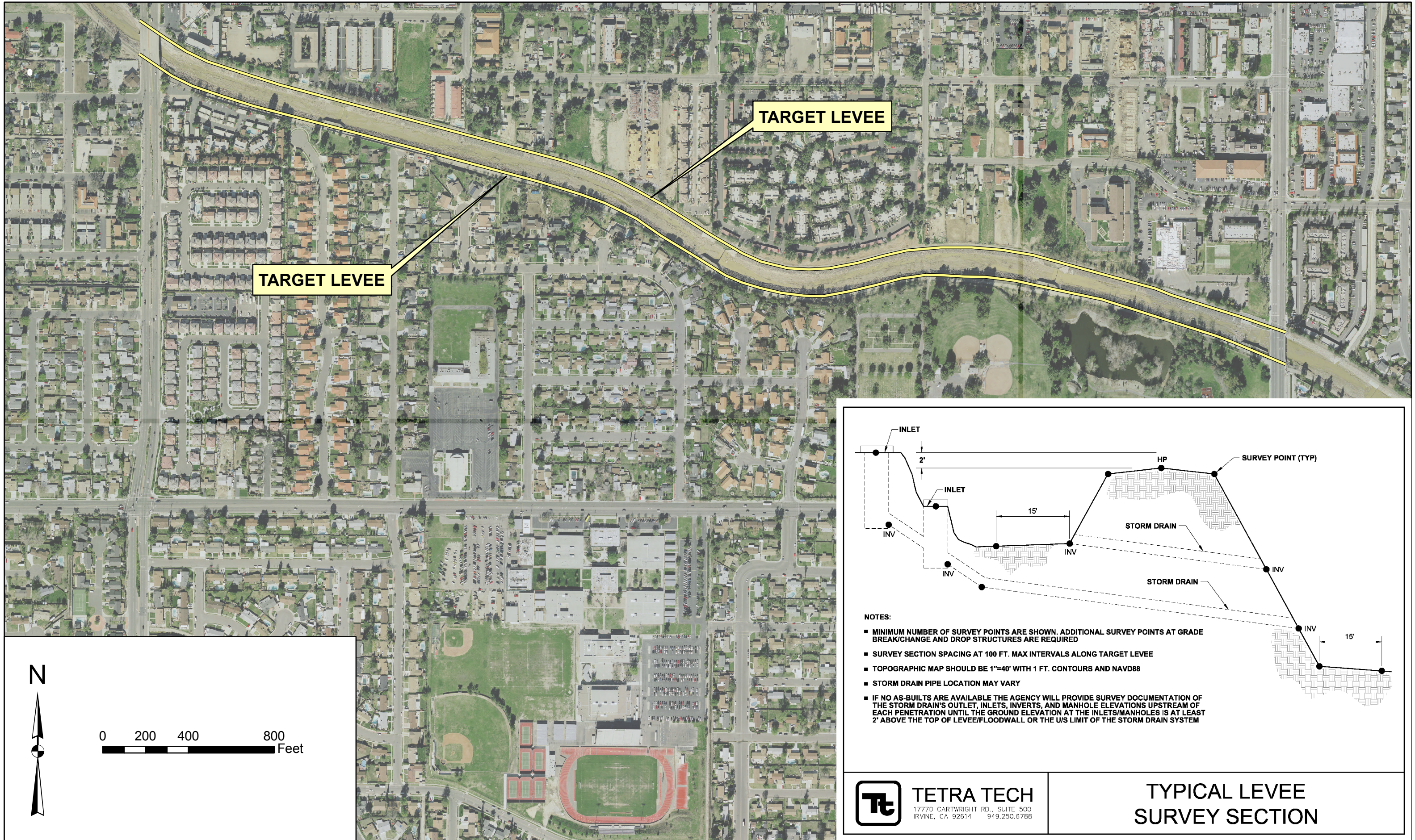


SURVEY PLAN MAP ARROYO SIMI LEVEE (AS-6: FEMA ID 108)

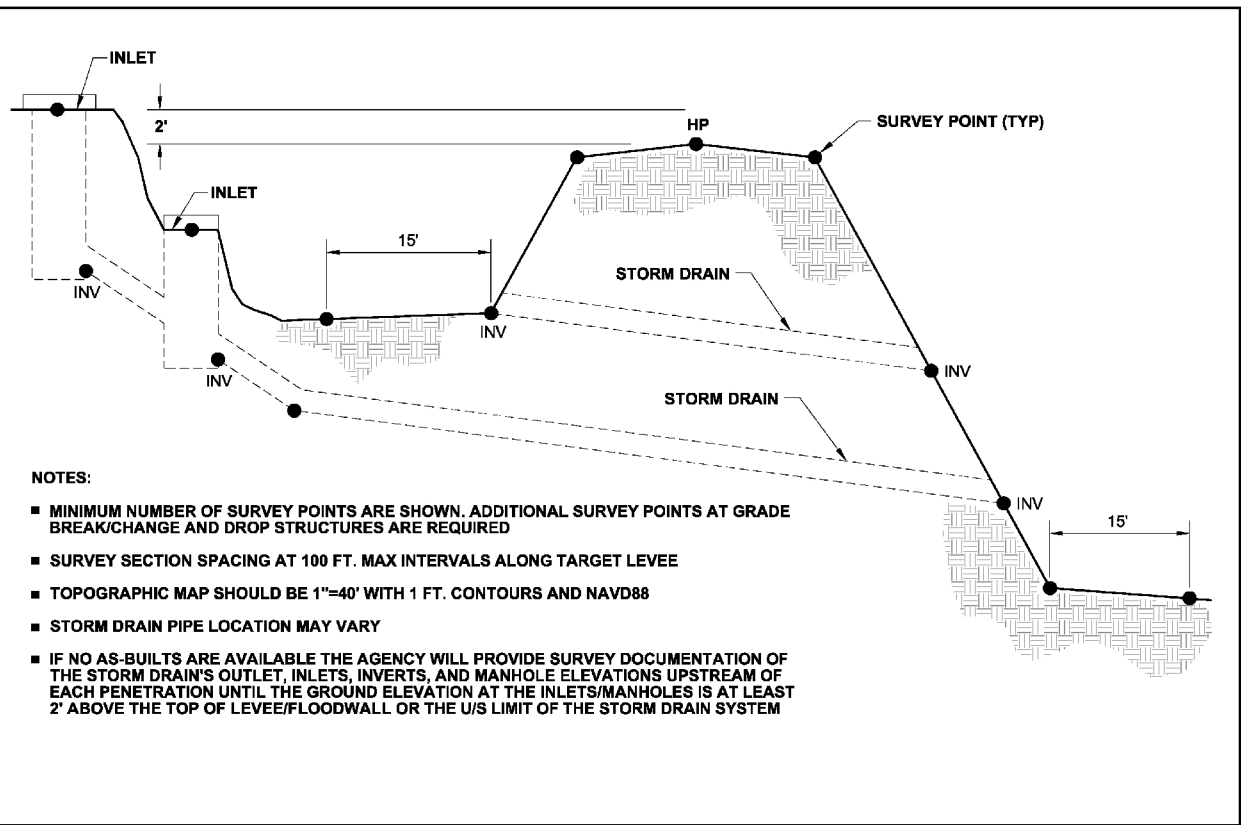


TARGET LEVEL

TARGET LEVEL



0 200 400 800 Feet



- NOTES:**
- MINIMUM NUMBER OF SURVEY POINTS ARE SHOWN. ADDITIONAL SURVEY POINTS AT GRADE BREAK/CHANGE AND DROP STRUCTURES ARE REQUIRED
 - SURVEY SECTION SPACING AT 100 FT. MAX INTERVALS ALONG TARGET LEVEE
 - TOPOGRAPHIC MAP SHOULD BE 1"=40' WITH 1 FT. CONTOURS AND NAVD88
 - STORM DRAIN PIPE LOCATION MAY VARY
 - IF NO AS-BUILTS ARE AVAILABLE THE AGENCY WILL PROVIDE SURVEY DOCUMENTATION OF THE STORM DRAIN'S OUTLET, INLETS, INVERTS, AND MANHOLE ELEVATIONS UPSTREAM OF EACH PENETRATION UNTIL THE GROUND ELEVATION AT THE INLETS/MANHOLES IS AT LEAST 2' ABOVE THE TOP OF LEVEE/FLOODWALL OR THE U/S LIMIT OF THE STORM DRAIN SYSTEM

Tt **TETRA TECH**
17770 CARTWRIGHT RD., SUITE 500
IRVINE, CA 92614 949.250.6788

**TYPICAL LEVEE
SURVEY SECTION**