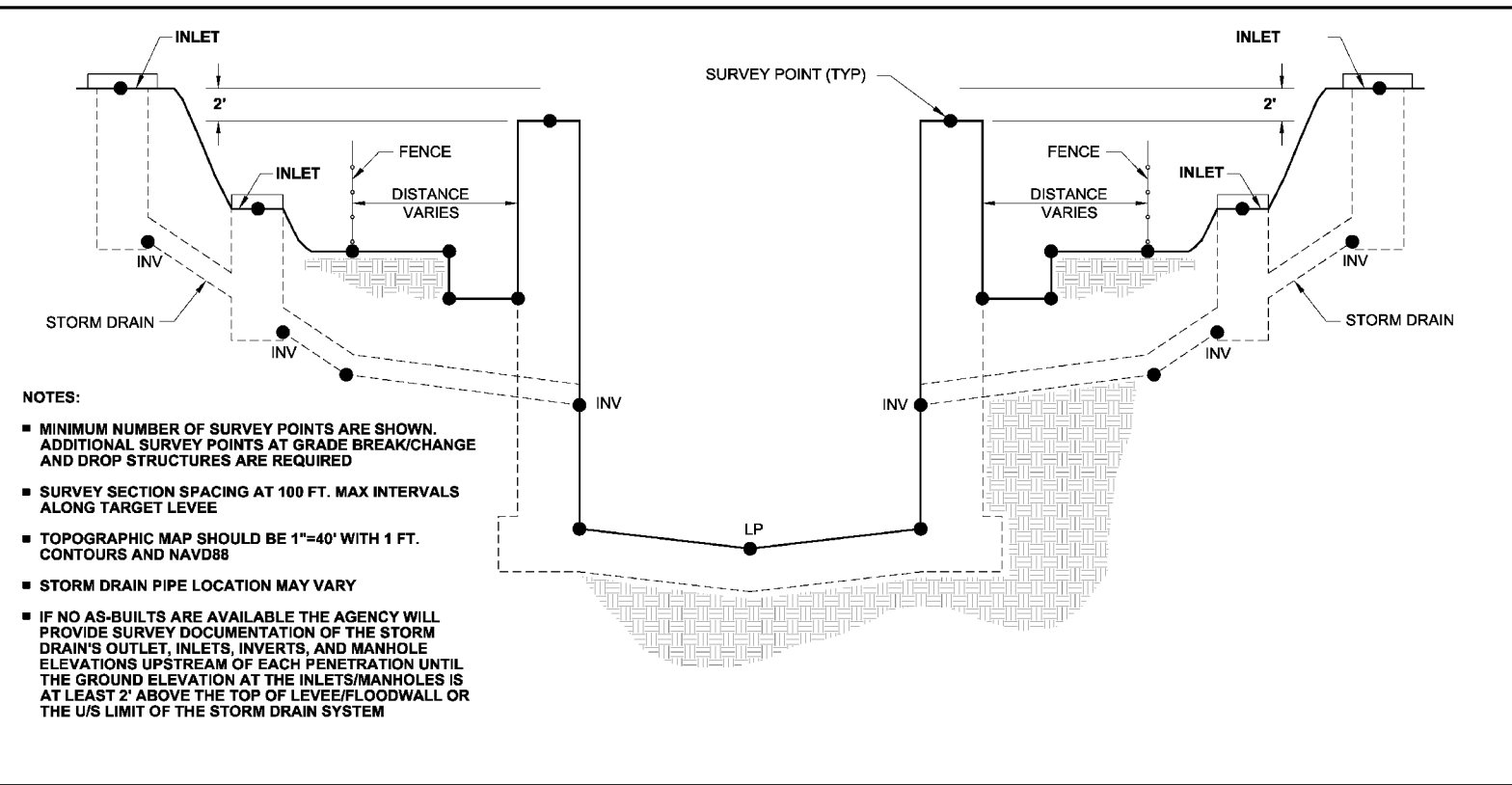
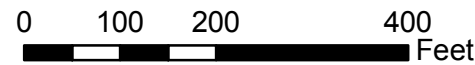
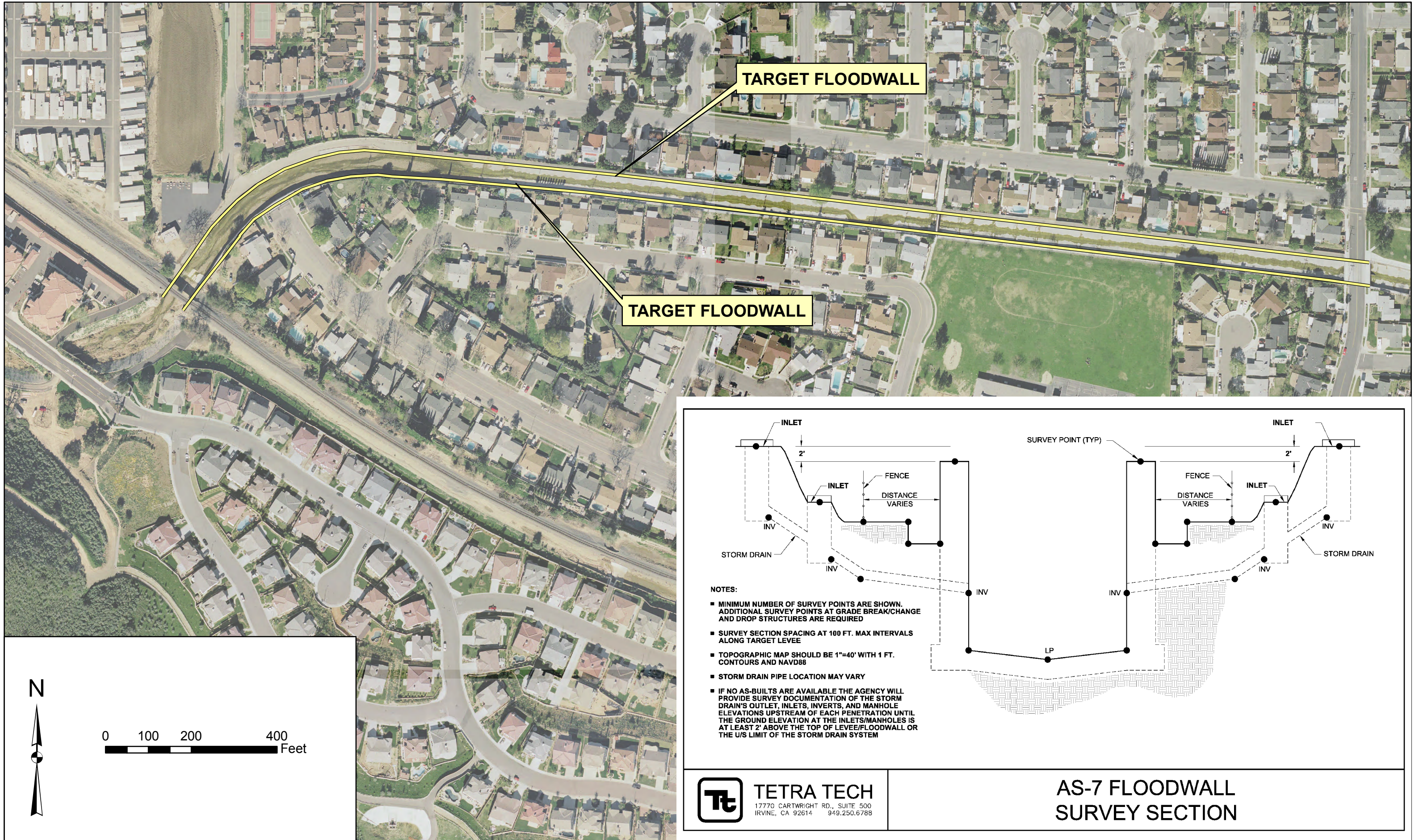


# SURVEY PLAN MAP

## ARROYO SIMI LEVEE (AS-7: FEMA ID 107, 112)



- NOTES:**
- MINIMUM NUMBER OF SURVEY POINTS ARE SHOWN. ADDITIONAL SURVEY POINTS AT GRADE BREAK/CHANGE AND DROP STRUCTURES ARE REQUIRED
  - SURVEY SECTION SPACING AT 100 FT. MAX INTERVALS ALONG TARGET LEVEE
  - TOPOGRAPHIC MAP SHOULD BE 1"=40' WITH 1 FT. CONTOURS AND NAVD88
  - STORM DRAIN PIPE LOCATION MAY VARY
  - IF NO AS-BUILTS ARE AVAILABLE THE AGENCY WILL PROVIDE SURVEY DOCUMENTATION OF THE STORM DRAIN'S OUTLET, INLETS, INVERTS, AND MANHOLE ELEVATIONS UPSTREAM OF EACH PENETRATION UNTIL THE GROUND ELEVATION AT THE INLETS/MANHOLES IS AT LEAST 2' ABOVE THE TOP OF LEVEE/FLOODWALL OR THE US LIMIT OF THE STORM DRAIN SYSTEM

**Tt TETRA TECH**  
 17770 CARTWRIGHT RD., SUITE 500  
 IRVINE, CA 92614 949.250.6788

**AS-7 FLOODWALL  
 SURVEY SECTION**