



Public Works Agency



# Santa Clara River Levee Improvements Downstream of Union Pacific Railroad (SCR-3) Project

Wednesday, March 4, 2015

Public Scoping Meeting on the (SCR-3)  
Levee Improvements Project

March 4, 2015



# Presenters

- **Tully Clifford**, Director, Watershed Protection District (WPD), County Public Works Agency
- **Gerard Kapuscik**, Manager, Strategic Decision Support Group and Levee Certification Program, VCWPD
- **Jon Davidson**, Vice President, Aspen Environmental Group





# Meeting Outline

- *Purpose of the Meeting*
- *Project Objectives*
- *Project Description Updates*
- *Results of the Initial Study*
  - *No Impact*
  - *Less than Significant Impact*
  - *Potentially Significant Impacts*
- *Alternatives to be Considered in the EIR*
- *EIR Process and Schedule*
- *Opportunities for Public Comment*





# Meeting Purpose

- *Refresh project understanding*
- *Review the results of the Initial Study*
- *Discuss the environmental topics to be analyzed in the EIR*
- *Identify alternatives to be analyzed in the EIR*
- *Answer questions to clarify project & process*
- *Provide an opportunity for public input*
  - *Thoughts on Potential Project Impacts*
  - *Suggestions for Additional Alternatives*
  - *Ideas for Ways to Reduce Impacts*



# SCR-3 Levee – Project Need



# SCR-3 Levee – Project Reaches



# SCR-3 Levee – Project Issues





# ***SCR-3: Project Objectives***

- 1. Comply with FEMA levee certification requirements identified in 44 CFR §65.10 through structural improvements to the existing SCR-3 levee capable of withstanding the 1% annual chance (aka 100-year) flood event





# ***SCR-3: Project Objectives (cont.)***

- 2. Upgrade & maintain existing SCR-3 structures to provide continuous flood protection to properties within the City of Oxnard that would otherwise require flood insurance under the NFIP, & do so in a cost effective manner before FEMA revision of adjacent FIRMs





# ***SCR-3: Project Objectives (cont.)***

- 3. Design flood protection structures that accommodate a future bikeway along N. Ventura Road in support of the City of Oxnard Santa Clara River Trail Master Plan



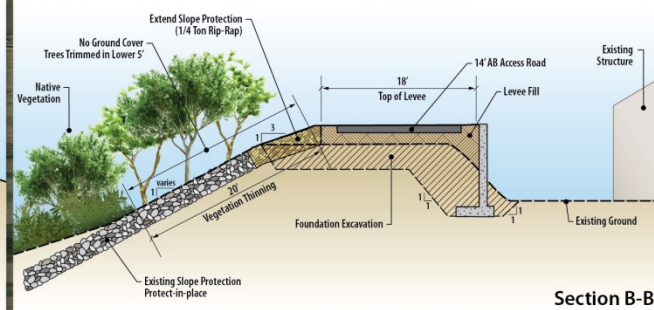
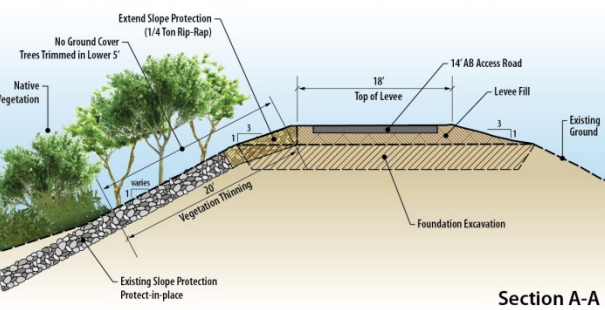


# SCR-3: Project Description

## **Reaches 1 – 3, Combined (2 Options)**

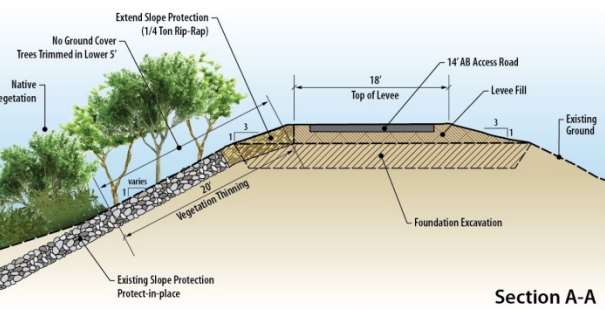
- *Option 1A – Full Levee System*
  - *Continuous raised earthen levee with a CMB maintenance road, minimized tie-ins to existing landfills*
- *Option 1B – Minimum Levee System*
  - *Raised earthen levee in Reaches 1 and 3, but no levee improvements within Reach 2; fill golf course swale*



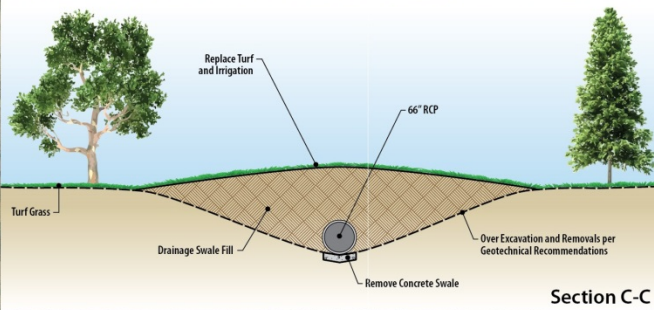


# Option 1A (Reaches 1-3): Full Levee System





Section A-A



Section C-C



# Option 1B (Reaches 1-3): Minimum Levee System



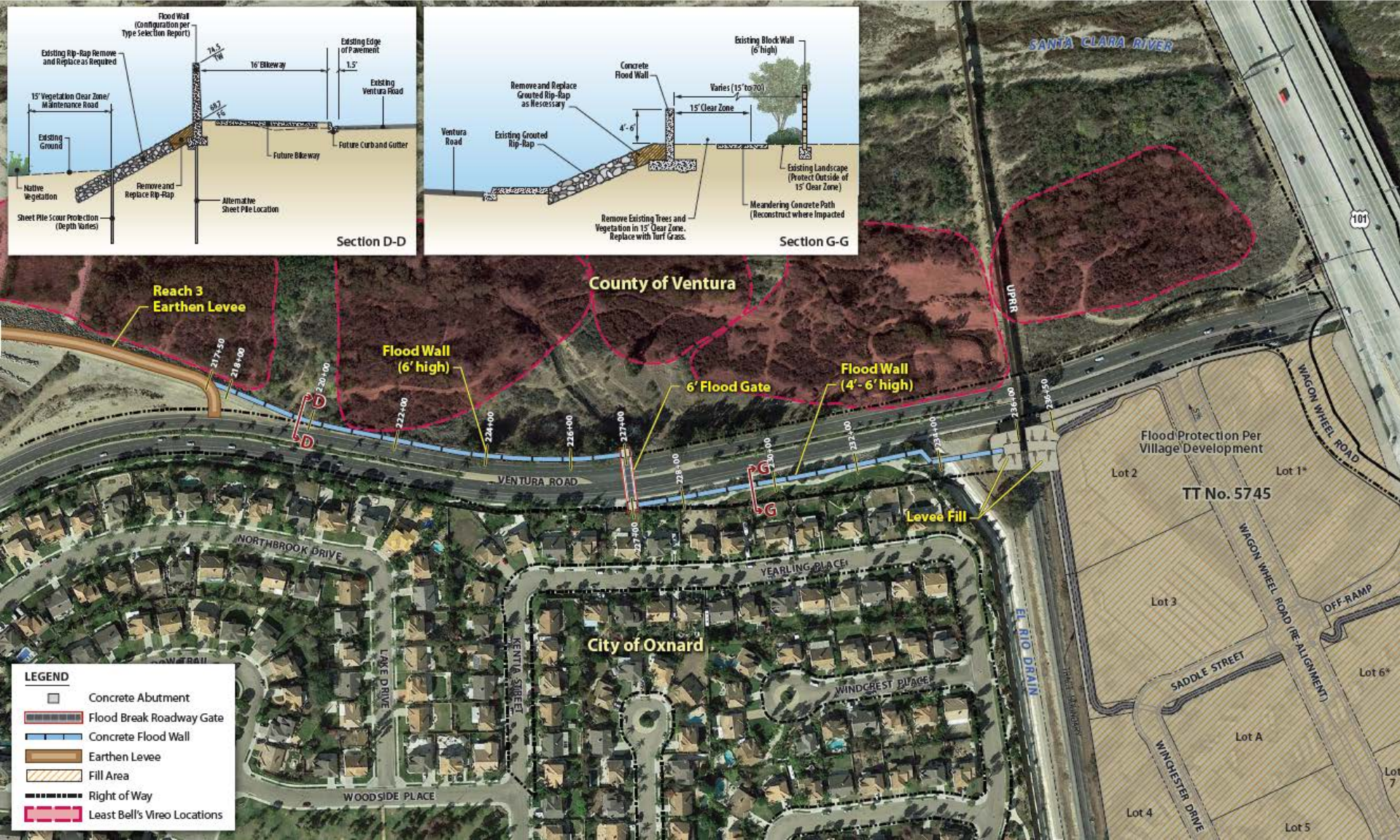


# SCR-3: Project Description

## Reach 4

- *River side / Land side Floodwall (Modification of Existing Structures)*
  - *~6-foot high, 950-foot long floodwall along the riverside of Ventura Rd. to a high point in Ventura Rd.*
  - *Floodbreak flood gate installed across Ventura Rd.*
  - *4- to 6-foot high, 860-foot long floodwall along top of existing slope on south side of Ventura Rd. to Union Pacific Railroad bridge*





## Reach 4: River Side / Land Side Floodwall

River Side

Land Side

## ***SCR-3 Reach 4: Existing Condition***

River side

Land side



## *Reach 4: River Side / Land Side Floodwall*

# Reach 4: Road Impacts



Public Works Agency





# *Environmental Review*

- Purpose of Environmental Review
  - Comply with the California Environmental Quality Act
  - Identify and disclose potential effects on the environment
  - Identify ways to reduce or avoid significant environmental impacts
  - Obtain permits in accordance with federal and State environmental laws





# Initial Study Results: No Impact

- Groundwater Quality
- Agricultural Soils
- Paleontological Resources
- Coastal Beaches & Sand Dunes
- Hazards:
  - Fault Rupture
  - Seiche & Tsunami Hazards
  - Landslide/Mudflow
  - Expansive Soils
- Fire Hazards
- Aviation Hazards
- Hazardous Materials
- Housing
- Transportation/Circulation:
  - Safety/Design of Private Access Roads
  - Tactical Access (Fire)
  - Bus Transit
  - Airports
  - Harbors
- Water Supply
- Waste Treatment/Disposal
  - Individual Sewage Systems
  - Sewage Facilities
  - Solid Waste Facilities
- Fire Protection
- Education





# Initial Study Results: Less than Significant

- Water Resources
  - Groundwater Quantity
  - Surface Water Quantity
  - Surface Water Quality
- Mineral Resources
- Agricultural Land Use Compatibility
- Hazards:
  - Ground Shaking
  - Subsidence
- Hydraulic Hazards
  - Non-FEMA
  - FEMA
- Greenhouse Gases
- Community Character
- Transportation/Circulation:
  - Safety/Design of Public Roads
  - Pedestrian/Bicycle Facilities
  - Railroads
- Waste Treatment/Disposal:
  - Solid Waste Management
- Flood Control/Drainage
- Law Enforcement/Emergency Services





# *Initial Study Results: Less than Significant with Mitigation*

- Cultural Resources
  - Archaeological
  - Historical
- Daytime Glare
- Recreation





# *Initial Study Results: Potentially Significant*

- Air Quality
- Biological Resources
- Scenic Resources
- Hazards: Liquefaction
- Hazardous Waste
- Noise and Vibration
- Public Health
- Transportation/Circulation:
  - Level of Service
  - Pipelines
- Utilities
- Flood Control/Drainage

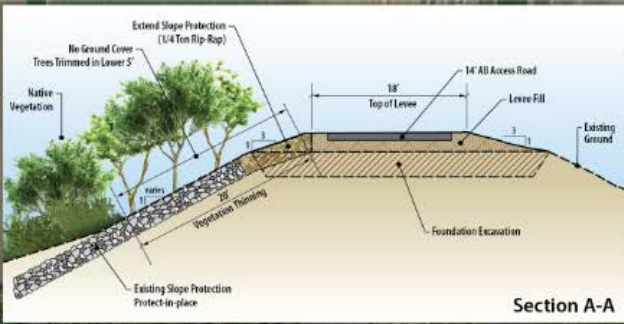




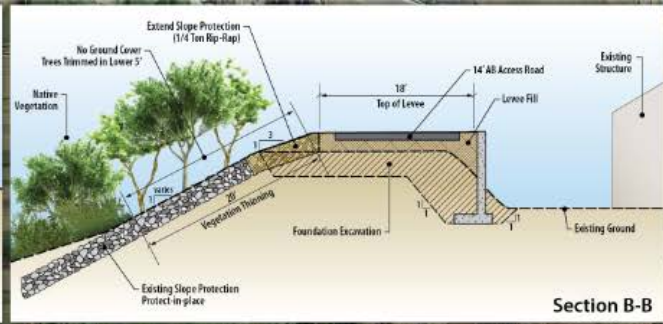
# *Alternatives to be Considered in the EIR*

- Reaches 1-3: Levee System with Landfill Tie-ins and Golf Course Protection
- Reach 4: River Side Floodwall
- Reach 4: River Side / Land Side Floodwall Extending up El Rio Drain
- Pre-scoping meeting alternatives
  - Upstream Detention
  - Low Impact Development (LID)
  - Natural Floodplain Attenuation





Section A-A

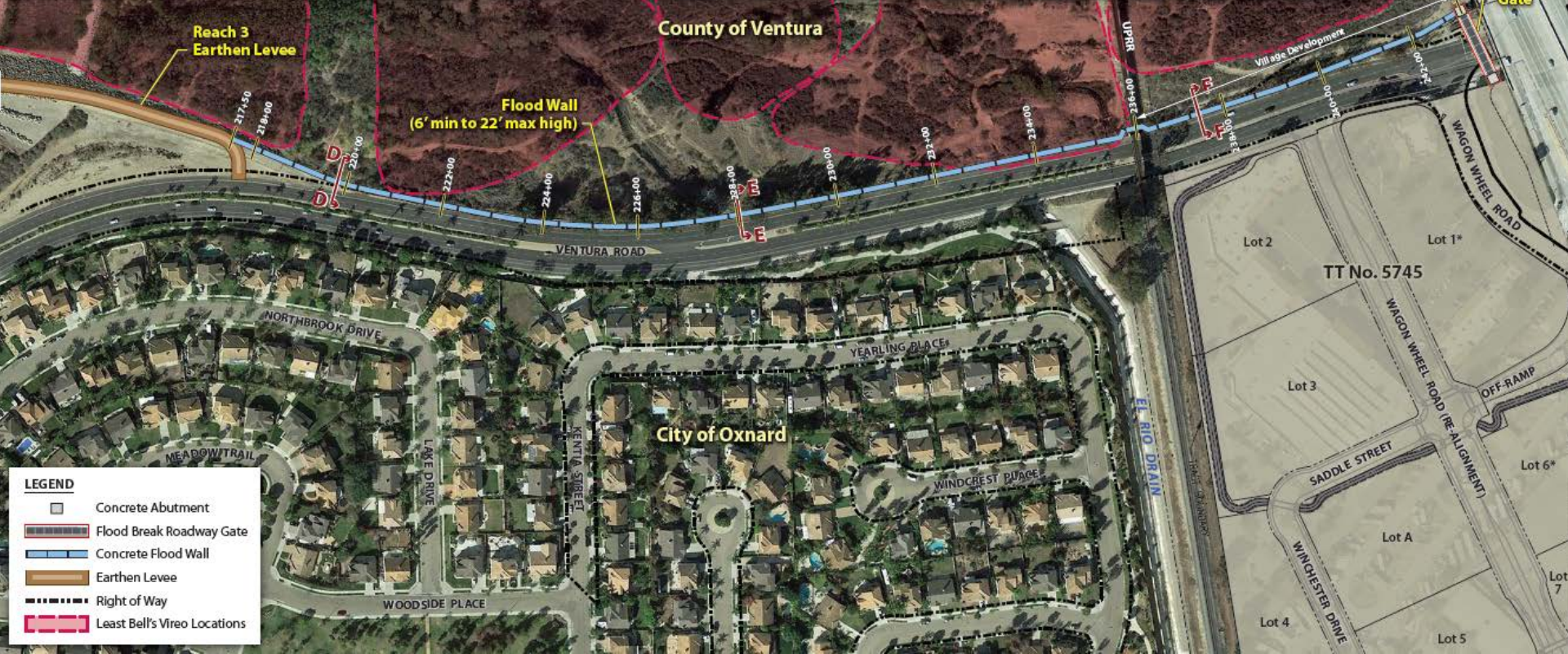
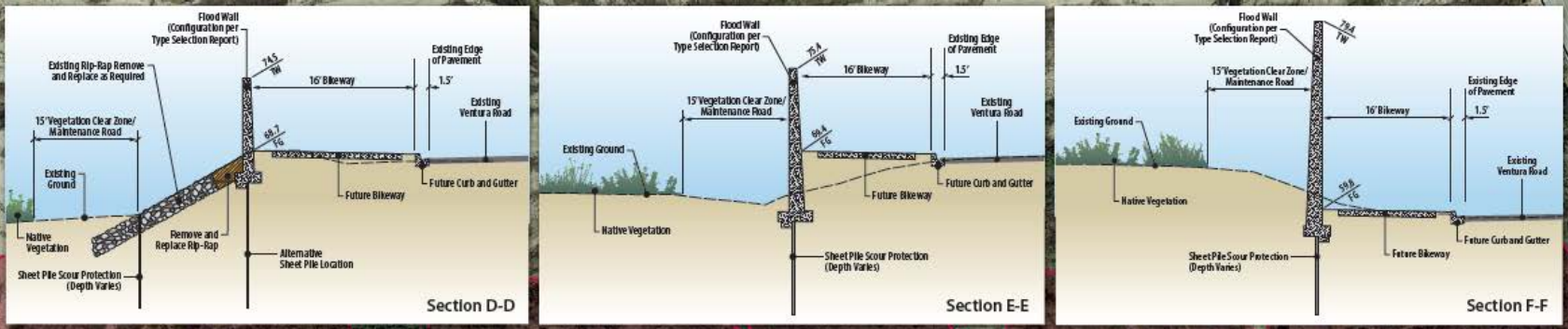


Section B-B



# Reaches 1-3: Levee System with Landfill Tie-ins and Protection to Golf Course





# Reach 4: River Side Floodwall



River Side

Land Side



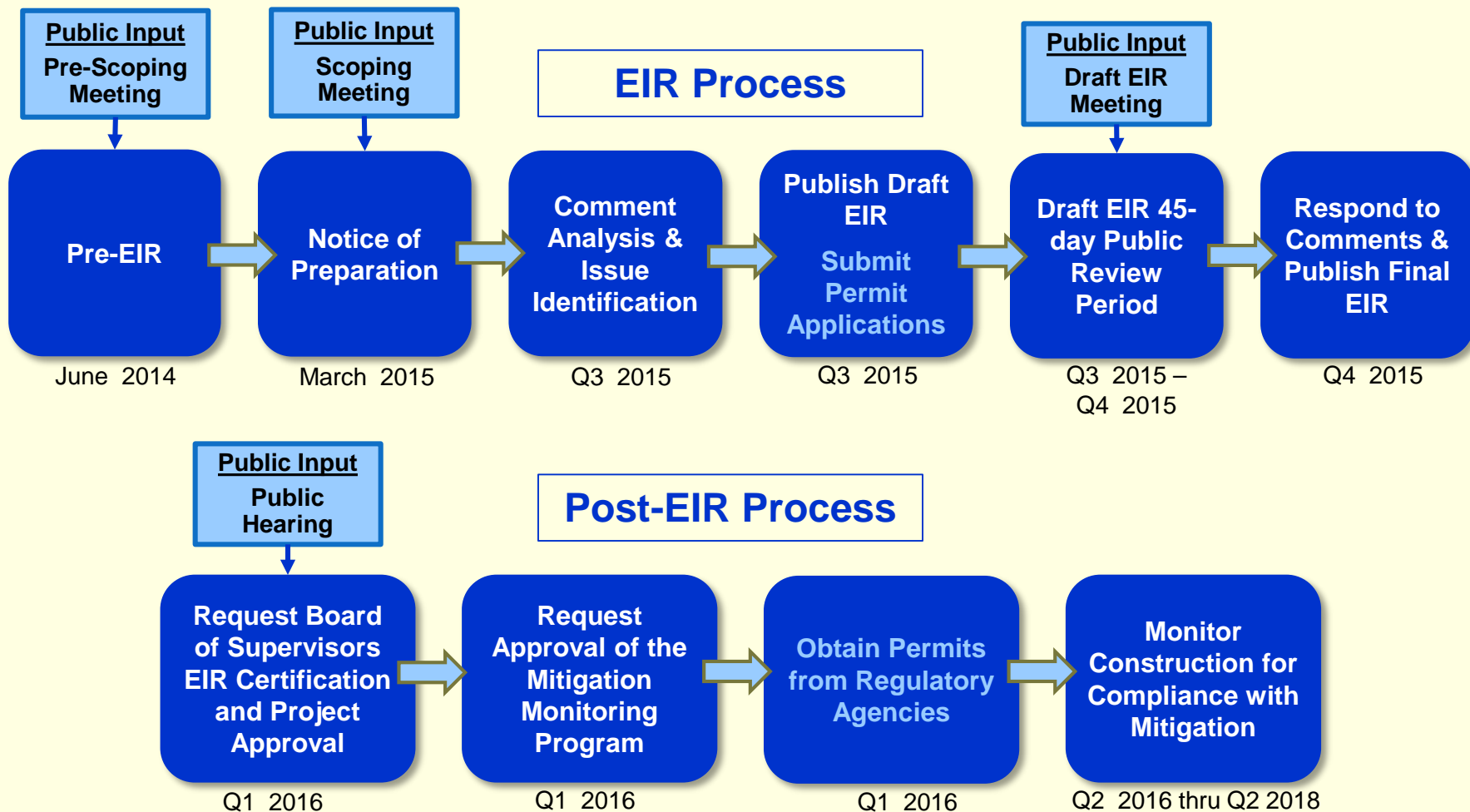
## *Reach 4: River Side Floodwall*





# Environmental Review Process

Public Works Agency





# SCR-3 – Project Information Website Resources

---

- Ventura County Watershed Protection District:
  - [www.vclevees.com](http://www.vclevees.com)
- County of Ventura:
  - [www.vcfloodinfo.com/](http://www.vcfloodinfo.com/)
- FEMA:
  - [www.floodsmart.gov/floodsmart/](http://www.floodsmart.gov/floodsmart/)





# SCR-3 – Public Comments

- Public comment period: **02/26 - 03/27/15**
- Comments to be submitted in writing
  - Submit comment forms tonight or mail in later
  - Online at: **[www.vclevees.com](http://www.vclevees.com)**
  - By letter addressed to:  
**Ventura County Watershed Protection District**  
**Angela Bonfiglio Allen**  
**800 South Victoria Avenue**  
**Ventura, CA 93009-1600**





# SCR-3 – Contact Information

- **Angela Bonfiglio Allen, Environmental Planner**
  - Phone: (805) 477-7175
  - E-mail: [angela.bonfiglio@ventura.org](mailto:angela.bonfiglio@ventura.org)
  
- **Gerard Kapuscik, Manager, Strategic Decision Support Group and Levee Certification Program**
  - Phone: (805) 648-9284
  - E-mail: [gerard.kapuscik@ventura.org](mailto:gerard.kapuscik@ventura.org)



# SCR-3 Levee – Questions?





# SCR-3: Scoping Comments

- Line up behind the microphone
- State your name and organization
- 3-minute time limit per individual
- Submit comments in writing using comment form provided

